

VOICE LEADING EXERCISES WITH GIANT STEPS

PT. 1: CHORD SCALE VOICE LEADING: ESTABLISHING "THE GRID"

G MAJOR **F# MIXOLYDIAN (B MAJOR)** **G PHRYGIAN (E FLAT MAJOR)**

*LET'S USE MODES TO MAKE THE ROOT NOTE OF THE 3 KEY CENTERS AS CLOSE AS POSSIBLE (G-AFLAT-AFLAT (G#))
THIS ALLOWS US TO SEE THE VOICE LEADING MORE CLEARLY AND AVOID ALWAYS JUMPING TO THE ROOT.
IT'S ALSO A GREAT WAY TO PRACTICE OUR MODES:)

SHRED SCALES:

SHAPE III **III** **SHAPE III** **I** **SHAPE II** **SHAPE II**

PATTERNS:

MELODIC IDEAS:

VARIATION:

SHAPE SHIFTING: KEY OF G TO KEY OF B

(EXPERIMENT WITH FORWARD MOTION: 1/2/3 BEATS)

ADJUST TO KEY OF B

KEY CENTERS (2 BARS EACH)

G MAJOR (G MAJOR)

B MAJOR (F# MIX)

EFLAT MAJOR (G PHRYGIAN)

SLIP SCALES

*STARTING WITH THE G SCALE LET'S EXPAND OUR SHRED SCALES TO SLIP USING THE 2+4+1 METHOD! BECAUSE THE KEY CENTERS SHIFT SO QUICKLY, THIS HELPS US MINIMIZE THE RANGE OF MOVEMENT. FOR MORE INFO ON THIS CONCEPT, CHECK OUT THE ROSETTA SYSTEM AND JACOB'S LADDER COURSES.

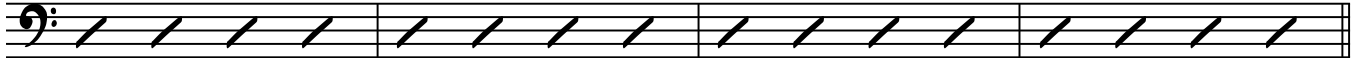
G MAJOR **G# AEOLIAN** **AFLAT LYDIAN**

PT. 2: ARPEGGIO SUBSTITUTIONS WITHIN "THE GRID"

1ST HALF OF TUNE

B MAJ⁷ D⁷ G MAJ⁷ B^{b7} E^b MA⁷ A MIN D⁷

ORIGINAL CHANGES



*LET'S USE AN ARPEGGIO BASED APPROACH SUBSTITUTING OTHER CHORDS FOR SMOOTHER VOICE LEADING! THESE ARE GREAT FLEXIBILITY EXERCISES. REMEMBER TO PLAY ALL CHORDS WITHIN THE 2+4+1 FRAME!

A

SUBSTITUTION (MOVING DOWN BY WHOLE STEPS) STRARING FROM THE ROOT TRAINING WHEELS VERSION ETC.

B

SUBSTITUTION (MOVING UP BY HALF STEPS) ETC.

2ND HALF OF TUNE (STARTING BAR 9):

CONCEPT 1: ASCENDING WHOLE STEP PENTATONICS

F MIN PENTATONIC

G MIN PENTATONIC

A MIN PENTATONIC

B MIN PENTATONIC

C# MIN PENTATONIC

D#/E FLAT PENTATONIC

F MINOR PENTATONIC

G MINOR PENTATONIC

*STARTING FROM ROOT NOTES ON THE D OR G STRING (TRAINING WHEELS VERSION)

FMIN⁷ **B^b7** **E^bMAJ⁷** **AMIN⁷*** **D⁷** **GMAJ⁷**
C[#]MIN⁷ **F[#]7** **BMAJ⁷** **FMIN⁷** **B^b7** **E^bMAJ⁷**

JOEY ALEXANDER CONCEPT

E^bMAJ⁷ **FMAJ (LYDIAN)** **GMAJ** **AMIN⁷** **D⁷** **AMAJ (LYDIAN)** **AMIN⁷** **D⁷**